

1st March 2024

## Message from Mr Green

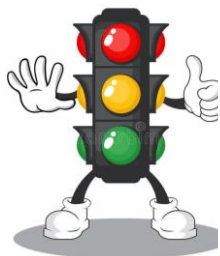
Happy Friday!

I wrote to you all in Spring 1 about raising awareness of, and improving attendance here at VPA. School attendance is a big focus for us all, as we understand that good attendance at school is crucial to our young people reaching their potential and being the best that they can be! This week, our attendance in school was 95.4%, which is a nice improvement over our yearly average of 92.6%. We've also had a reduction in persistent absenteeism and I'd like to say thank you to the attendance team and those of you who have made a really big effort to improve attendance! As we strive to improve attendance further, I will keep you all updated with our progress and achievements

Next week, we have a stay and play in nursery, a special Mother's Day coffee morning, and there's World Book Day to look forward to! A big thank you to Miss Ralph and the events team for organising what looks like a fantastic day for all – I can't wait!

Have a fantastic weekend and I'll see you all on Monday!

## Attendance



This week: **95.4%**

So far this year: **92.6%**

EYFS/KS1 winner: **97.3%**

KS2 winner: **98.95%**

Well done to **1/JR** and **50M** who will be spending next week with **Biscuit Bear!**

## Reminders PE - Kit

Black, Navy, or white T-Shirt; Black or Navy shorts or joggers. Long hair to be tied back with a bobble. Earrings – stud earrings only to be worn for health and safety reasons.

### Monday to Thursday

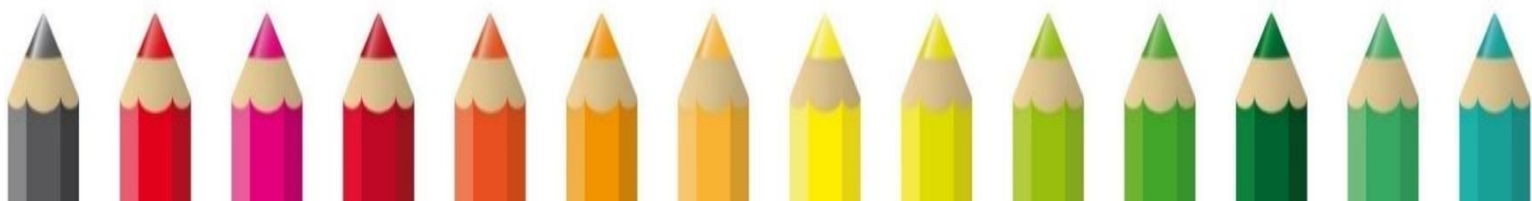
Community Pantry, Uniform / Clothing Exchange  
**3.15pm - 3.45pm**

### Thursday

Parent coffee and crafting sessions with Julie Parker Leeds Learning Hub  
**1.15pm - 3.15pm**

### Friday

Coffee mornings with Miss Dooley in the staffroom - all welcome! Please call in and join us!  
**8.30am - 9.30am**

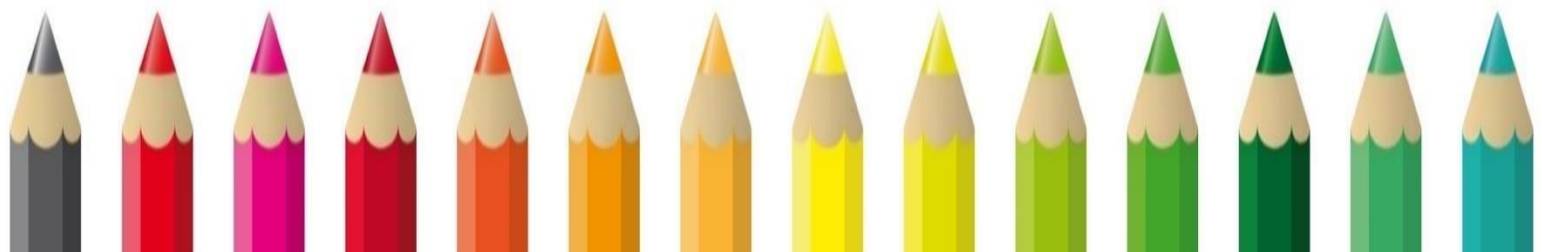


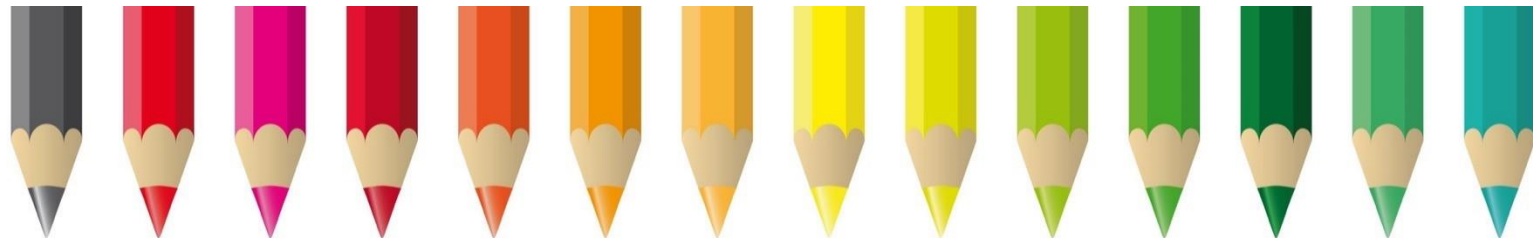




## Pizza Express Trip for our Extreme Readers Spring 1

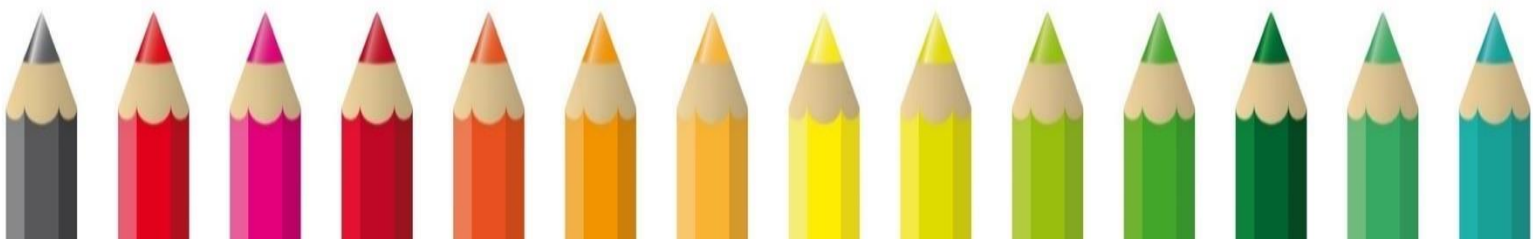
I wonder who will be on the next Trip? It could be you!

Each half term, a child from each class wins the Extreme Readers Award and is treated to a three-course meal at Pizza Express. Children are chosen by their class teacher for going above and beyond in their reading – either at home or in class, or possibly both! Last half term's lucky winners jetted off for their meal on Wednesday and they had a wonderful time! They even had chance to explore the play area **#sunshine**





<b>Spring 2</b> 	<b>Events</b> 
<b>School Opens Monday 19<sup>th</sup> February</b>	
<b>Tuesday 20<sup>th</sup> February</b>	<b>School Nurse in for Reception and Year 6 (screening)</b>
<b>Thursday 21<sup>st</sup> February</b>	<b>Magic Breakfast Event 7.30am – 8.30am</b>
<b>Wednesday 28<sup>th</sup> February</b>	<b>Extreme Readers Event</b>
<b>Friday 1<sup>st</sup> March</b>	<b>Parent coffee Morning all welcome Single Parent Power with guest speaker Emily Howard from the Leeds Learning partnership 8.45 am – 9.30am.</b>
<b>Monday 4<sup>th</sup> March</b>	<b>Nursery Stay and Play</b>
<b>Thursday 7<sup>th</sup> March</b>	<b>World Book Day Non-Uniform Day</b>
<b>Friday 8<sup>th</sup> March</b>	<b>Mother’s Day Coffee Morning</b>
<b>Monday 11<sup>th</sup> March</b>	<b>Year 5 cycling</b>
<b>Monday 11<sup>th</sup> March</b>	<b>Key stage 1 trip to Magna</b>
<b>Friday 15<sup>th</sup> March</b>	<b>Comic Relief Day non uniform day</b>
<b>Monday 18<sup>th</sup> March</b>	<b>Year 6 Residential to Robin Wood Wrexham!!!</b>
<b>Thursday 21<sup>st</sup> March</b>	<b>Math City Trip</b>
<b>Thursday 21<sup>st</sup> March</b>	<b>Easter Disco more information to follow</b>
<b>Thursday 21<sup>st</sup> and Friday 22<sup>nd</sup> March</b>	<b>Year 5 RE Day</b>
<b>Friday 22<sup>nd</sup> March</b>	<b>Spring After School Clubs End</b>
<b>Monday 25<sup>th</sup> March</b>	<b>Easter Egg Competition Entries to be brought into school</b>
<b>Thursday 28<sup>th</sup> March</b>	<b>Easter Egg Winners</b>
<b>Thursday 28<sup>th</sup> March</b>	<b>School closes for Easter Holidays</b>
<b>Monday 15<sup>th</sup> April</b>	<b>School Reopens for Summer 1</b>





# EAST END PARK NEW BIKE TRACK LAUNCH



**EAST END PARK BIKE TRACK  
SATURDAY 16TH MARCH  
1PM - 3PM**

**BIKE AND ROLLER SKATING SKILLS WITH OUR  
EXPERT COACHES**

**FAMILY-FRIENDLY FUN NAVIGATION CHALLENGE &  
INFORMATION ON WALKING AND WHEELING  
ACTIVITIES IN YOUR AREA**



**VISIT DR BIKE FOR A BIKE HEALTH CHECK AND MINOR REPAIRS.  
CHECKS WILL BE ON A FIRST COME FIRST SERVED BASIS AND  
CHILDREN MUST BE ACCOMPANIED BY AN ADULT**

**REFRESHMENTS, KIT DONATION, BIKE SAFETY  
COMMUNITY CONVERSATIONS AND PRIZES!**



For more information contact us at  
[activetravelsocialprescribing@leeds.gov.uk](mailto:activetravelsocialprescribing@leeds.gov.uk)

[walkitrideit.com](http://walkitrideit.com)

**WALK IT. RIDE IT.**

**Free  
Hygiene  
Products**



**Pre-loved  
Ladies  
Clothing**

*International*

**WOMEN'S  
DAY EVENT**

**Menopause  
Support**

Available to pre book

**THURSDAY 7TH MARCH  
10-12:30 IN JIMI'S/CAFE**

**Crafts**

**The Old Fire Station LS9 6NL**

01132136813 [reception@theoldfirestationgipton.org.uk](mailto:reception@theoldfirestationgipton.org.uk)

