

15th March 2024

Message from Mr Green

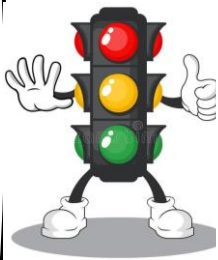
Happy Friday!

We began this week in style, as KS1 jumped on a couple of coaches and had an epic trip to Magna for some science adventure! It's fair to say that they all had a cracking day - full of many exciting experiments that resulted in awe and wonder. After listening to their experiences, I couldn't help but be extremely jealous! On Thursday, Miss Paterson took more of our Wellbeing Warriors on a trip to the Yorkshire Sculpture Park, which is fast becoming a favourite of ours. With a Sculpture focus in our Art curriculum, I'm sure that we can find a way to get even more of our children to experience this wonderful place!

Cycle North have also been in school this week to help Year 5 learn to ride their bikes safely in the community, and the instructors were very impressed with the 'bike-ability' and attitudes of our children! Well Done Year 5! Finally, I cannot discuss this week without mentioning Comic Relief! Mr McHale warmed everybody up on Monday with some jokes during assembly, and he has been busy making the video that has been shared with us all today. A big thank you to Mr McHale for directing, and the performers for giving up their time, for what is a brilliant video! It has been a fantastic day full of fun and jokes performed by our children and all in the name of a very worthy charity!

Have a great weekend and we will see you all on Monday!

Attendance



This week: **94.3%**

So far this year: **92.8%**

EYFS/KS1 winner: **97.9%**

KS2 winner: **98.6%**

Well done to **PM Nursery** and **6LB** who will be spending next week with **Biscuit Bear!**

PE - Kit

Black, Navy, or white T-Shirt; Black or Navy shorts or joggers. Long hair to be tied back with a bobble. Earrings – stud earrings only to be worn for health and safety reasons.

Monday to Thursday

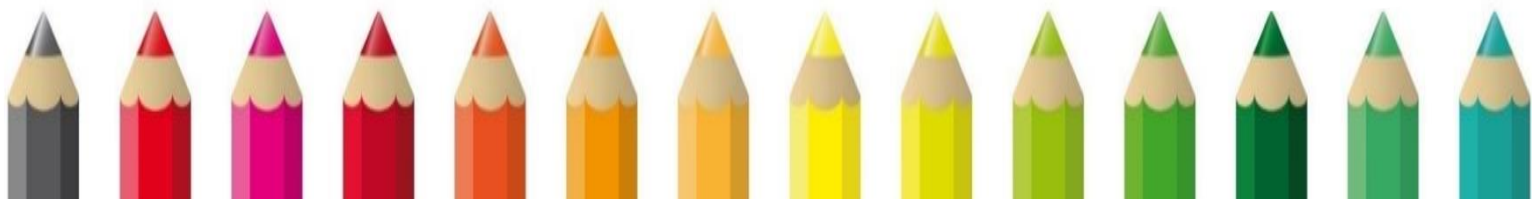
Community Pantry, Uniform / Clothing Exchange
3.15pm - 3.45pm

Thursday

Parent coffee and crafting sessions with Julie Parker Leeds Learning Hub
1.15pm - 3.15pm

Friday

Coffee mornings with Miss Dooley in the staffroom - all welcome! Please call in and join us!
8.30am - 9.30am





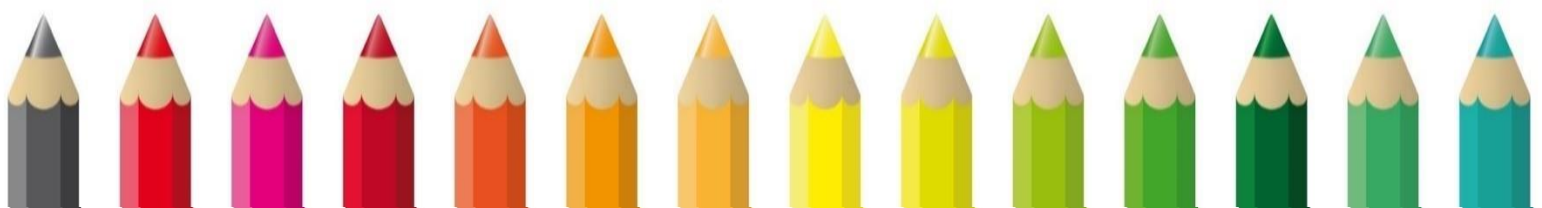
Bikeability Year 5

In this week's Bike-ability sessions with Cycle North, Year 5 students have been actively honing their cycling skills and road safety awareness. Under the guidance of experienced instructors, students have been mastering essential manoeuvres such as signalling, safe stopping, and navigating junctions. They've also been learning about the importance of wearing helmets and reflective gear for visibility. Through engaging practical exercises and interactive discussions, students are not only becoming more confident cyclists but also responsible road users. These sessions are equipping them with valuable skills that will serve them well both now and in the future.



Key stage 1 Visit Magna!

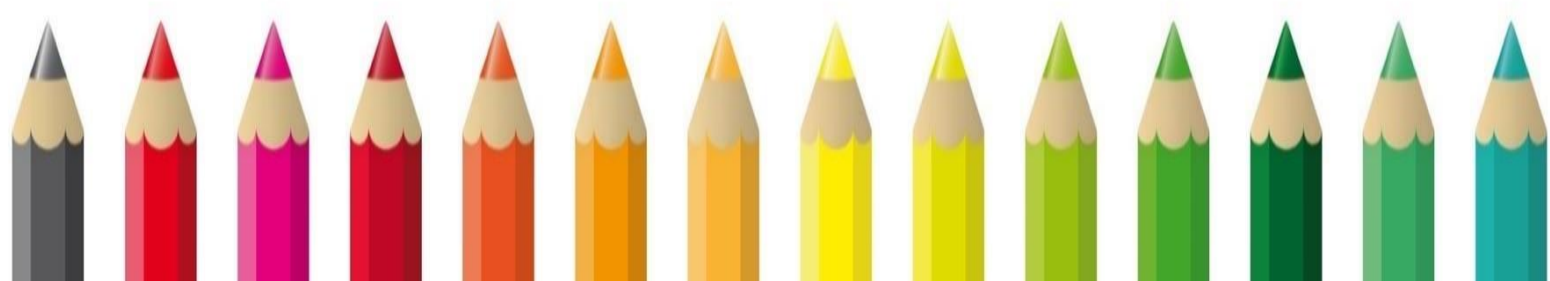
On Monday, a very excited KS1 headed out on their trip to Magna to explore all things science! The children had a great time watching and taking part in a range of exciting and mesmerising science experiments. They then spent the afternoon exploring the museum and learning all about the elements; earth, air, fire and water. A firm favourite was without a doubt the fire tornado! KS1 then ended the day with a quick play in the park before a sleepy coach ride home.

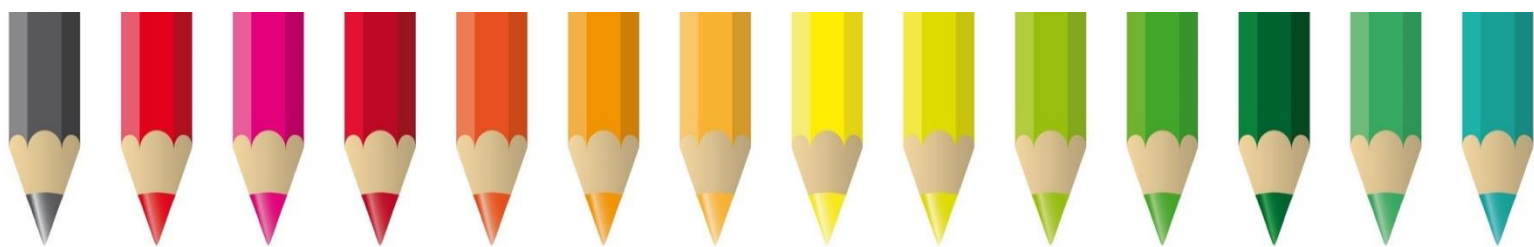


Spring 2 Events

School Opens Monday 19th February

Tuesday 20 th February	School Nurse in for Reception and Year 6 (screening)
Thursday 21 st February	Magic Breakfast Event 7.30am – 8.30am
Wednesday 28 th February	Extreme Readers Event
Friday 1 st March	Parent coffee Morning all welcome Single Parent Power
Monday 4 th March	New Nursery Stay and Play
Thursday 7 th March	World Book Day Non-Uniform Day
Friday 8 th March	Mother's Day Coffee Morning
Monday 11 th March	Year 5 cycling
Monday 11 th March	Key stage 1 trip to Magna
Friday 15 th March	Comic Relief Day is a non-uniform day in school. Every child in school will receive a cake. Red Nose Day is a fundraising campaign run by the non-profit organization Comic Relief Inc. Red Nose Day brings people together to raise money to assist in ending child poverty around the world. All donations received will be sent to the charity in support of this event.
Monday 18 th March	Year 6 Residential to Robin Wood Wrexham!!!
Thursday 21 st March	Math City Trip
Thursday 21 st March	Easter Disco more information to follow
Thursday 21 st and Friday 22 nd March	Year 5 RE Day
Friday 22 nd March	Spring After School Clubs End
Monday 25 th March	Easter Egg Competition Entries to be brought into school
Thursday 28 th March	Easter Egg Winners
Thursday 28 th March	School closes for Easter Holidays
Monday 15 th April	School Reopens for Summer 1





Summer Term 1

PARENT SUPPORT 2024 EVENTS

SUPPORTING OUR COMMUNITY

19th April

Meet the SENDCO

FIND OUT ABOUT WHAT ROLE OUR SENDCO, MR COOK, PLAYS IN SCHOOL.

26th April

Online Safety

FIND OUT HOW TO KEEP CHILDREN SAFE ONLINE WITH MR MCHALE.

3rd May

SEND Focus - AUTISM

FIND OUT ABOUT SUPPORT FOR CHILDREN WITH ASC/ASD IN SCHOOL.

10th May

Pupil Voice

FIND OUT HOW CHILDREN CONTRIBUTE TO WHAT GOES ON IN SCHOOL.

All events will take place on a Friday morning from 8:30am - 9:30am during our coffee morning time in the staffroom.



Made with PosterMyWall.com



EAST END PARK NEW BIKE TRACK LAUNCH



**EAST END PARK BIKE TRACK
SATURDAY 16TH MARCH
1PM - 3PM**

**BIKE AND ROLLER SKATING SKILLS WITH OUR
EXPERT COACHES**

**FAMILY-FRIENDLY FUN NAVIGATION CHALLENGE &
INFORMATION ON WALKING AND WHEELING
ACTIVITIES IN YOUR AREA**



**VISIT DR BIKE FOR A BIKE HEALTH CHECK AND MINOR REPAIRS.
CHECKS WILL BE ON A FIRST COME FIRST SERVED BASIS AND
CHILDREN MUST BE ACCOMPANIED BY AN ADULT**

**REFRESHMENTS, KIT DONATION, BIKE SAFETY
COMMUNITY CONVERSATIONS AND PRIZES!**



For more information contact us at
activetravelsocialprescribing@leeds.gov.uk

WALK IT. RIDE IT.

walkitrideit.com

