



NEWSLETTER

Friday 5th July 2024

A MESSAGE FROM OUR EXECUTIVE PRINCIPAL

THIS WEEK AT VICTORIA WE WELCOMED THE NEW TEACHERS WHO WILL START WITH US IN SEPTEMBER TO LEARN ABOUT THE VICTORIA MAGIC. THEY ARE ALL VERY KEEN TO MEET THE CHILDREN NEXT WEEK FOR OUR TRANSITION SESSIONS. THE CHILDREN WILL SPEND TIME SHARING A BOOK ABOUT MOVING ON AND RELATED ACTIVITIES PLUS BUILDING RELATIONSHIPS WITH THEIR NEW CLASS FRIENDS AND ADULTS. AN EXCITING WEEK AHEAD.

Mrs Jenkins

A MESSAGE FROM OUR VICE PRINCIPAL

THIS WEEK I WAS ABLE TO SPEND SOME QUALITY TIME WITH SOME OF OUR LITTLEST CHILDREN AT CANNON HALL FARM. THEY TRULY DID HAVE AN AMAZING DAY. THE CHILDREN ENJOYED SEEING ALL THE ANIMALS ESPECIALLY UP CLOSE AS SOME WERE HAVING THEIR PHOTOGRAPHS TAKEN FOR NEXT WEEK'S SHOW. THE CHILDREN DID US PROUD AND WERE TRULY EXCEPTIONALLY BEHAVED ALL DAY DESPITE REALLY WANTING TO GO ON THE PLAYGROUND AREAS (WHY WOULDN'T THEY). THERE ARE LOTS MORE TRIPS PLANNED BEFORE THE SUMMER BREAK SO THANK YOU FOR SUPPORTING US AS YOUR CHILDREN ARE REALLY MAKING US ALL PROUD. ENJOY THE WEEKEND!

Mrs Kingdon



LIKE AND FOLLOW US ON FACEBOOK

WEDNESDAY 10TH JULY

SCHOOL WILL CLOSE AT 2 PM FOR THE SUMMER FAIR TO BEGIN.
PLEASE CAN ALL PARENTS HELP US ENSURE A SPEEDY COLLECTION
IN ORDER FOR US ALL TO ENJOY THE FUN!!

ATTENDANCE

Our target is 97%

Nursery AM	89.4%
Nursery PM	88.5%
REF	90.4%
RCW	98.2%
1GG	95.3%
1/2JR	96.5%
2MH	94.7%
3MC	95.7%
3RK	94.3%
4OK	92.6%
4LP	91%
5OM	93.8%
5SW	96.7%
6LB	97.9%
6RM	91%

SCHOOL ATTENDANCE

THIS WEEK IS 94.02%

Well-done to RCW and 6LB who will be spending next week with Biscuit Bear!

NUMBER OF LATES THIS WEEK	60
---------------------------	----

GET INTO TEACHING

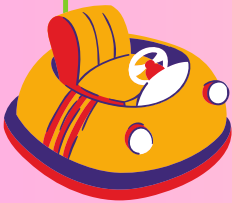
WITH JOSIE THIRKELL INSTITUTE

01226 720758

traintoteach@jtioe.org.uk

www.jtioe.org.uk

SAVE THE DATE

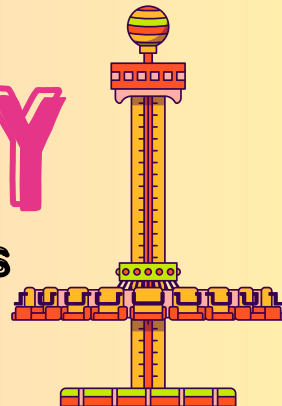


**FUN FAIR FESTIVAL FREE FOR
ALL CHILDREN**



MONDAY 22ND JULY

On Monday 22nd July, VPA will be holding its very own FUN FANANZA DAY free to all children. more details will follow shortly.



23rd
June

**ON TUESDAY 23RD OF JULY SCHOOL WILL BE
CLOSING AT 1.00 PM, PLEASE CAN PARENTS HELP
US ENSURE A SWIFT COLLECTION FOR THE SUMMER
FUN TO BEGIN!**

NUT FREE ZONE



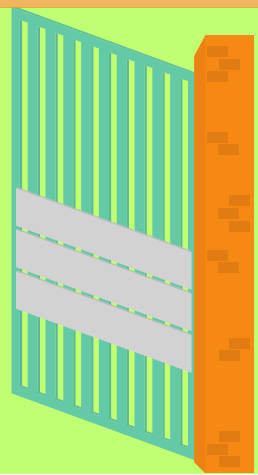
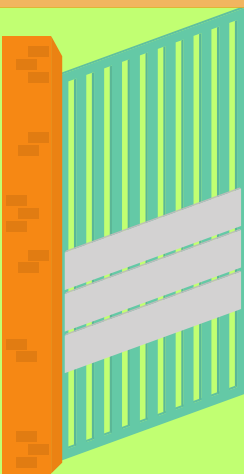
A polite reminder that our school is a **NUT-FREE ZONE**. This means there should be no type of nuts on school premises. If your child brings a packed lunch or snack, please make sure they don't contain nuts i.e. peanut butter, Chocolate spread etc.

SCHOOL GATES

The gates close at **8:40 am** at the front of the school and rear (near the field) meaning that if you arrive later than this children will need to enter via the reception and will be marked late for school.

The school date starts at 8:30am - please ensure your child is in school and ready to learn.

Car park gates will be closed to all traffic due to safety reasons. If access is needed for a vehicle you will need to ring the intercom system on the gate. Staff have a list of people who have special access arrangements.



PE TIMETABLE

PE kits need to include a white t-shirt, black shorts and trainers. For colder weather a sports jumper and joggers.

Please bring your child's PE kit on a Monday morning and leave it in school for the week to be returned on Friday.

Don't forget to label your child's clothes.



Monday	Reception, 1GG, 4LP
Tuesday	1/2JR, 3RK, 3MC 5OM, 5ES, 6RM, 6LB
Wednesday	2MH 3RK, 3MC, 4OK, 4LP 5ES, 5OM, 5SW
Thursday	1GG, 1/2JR, 2MH 6RM, 6LB
Friday	Reception, 4OK



Victoria Primary will once again host Big Talk Education to deliver Relationship Education in line with DfE guidance who will be in school on Friday 12th July.

Consents for this will be available via Arbor. To consent or decline please log in to Arbor to complete this consent.

SUMMER FAIR

WEDNESDAY 10TH JULY

2 PM - 4 PM



FOOD STALLS!

TOMBOLA!

SPONGE A TEACHER!



AND MORE!!

EVERYTHING
£1-£2!!



ALL DONATIONS WILL BE GREATLY APPRECIATED FOR THE RAFFLE AND TOMBOLA. PLEASE PASS THEM ALONG TO CLASS TEACHERS OR THE OFFICE IF IT CONTAINS ALCOHOL.

UPCOMING TRIPS

We have some exciting trips coming up and all trips have been added to Arbor. Payments for paid trips are to be paid via Arbor. To help with the costs, you are able to make your payment in installments. Payments are to be made prior to the event going ahead. If you are unable to make payments via Arbor, please speak to the school office.

03.07.2024	5SW & 6LB- Synagogue Trip	£7.50
04.07.2024	Reception- Cannon Hall Farm Trip	£15
Ongoing	Year 6 Celebrations	£10
19.07.2024	Year 5 & 6 Whitby Trip	£20

OH Snap

This Week's Snapshots



SUMMER TERM AFTER-SCHOOL CLUBS



CLASS	MON	TUE	WED	THU	FRI
Reception	Lego			Fine Motor Skills	
Year 1 & 2	Art/ Drawing		Lego Y1 & 2	Mega Maths Multisports Tag Rugby	
Year 3 & 4	Tag Rugby Art	Girls Football Y3-Y6	Football Lego		
Year 5 & 6	Chess SAT's Boosters (YR6)	Board Games Y3-6	Young Voices Y3-Y6	Guitar	Football
			Dodgeball Finishes at 4.00PM Rec-YR2		Multisports Finishes at 4.00PM YR 3-6

To book your child onto the session, visit the Arbor App, scroll down to activities and click clubs.

Summer 2 Events

10th June 2024	Year 3 & 4 Leeds City Centre Trip ✓
12th June 2024	5SW & 6LB Yorkshire Sculpture Park Trip ✓
20th June 2024	5OM & 6RM Synagogue Trip ✓
3rd July 2024	5SW & 6LB Synagogue Trip ✓
4th July 2024	Reception Cannon Hall Farm Trip ✓
5th July 2024	Afterschool Clubs End ✓
10th July 2024	Summer Fair-School Closes at 2pm
12th July 2024	Big talk in school & Reports to be sent home
17th July 2024	Year 6 PROM!!
17th July 2024	Sports Day 1
18th July 2024	Sports Day 2
18th July 2024	Year 6 Leavers Assembly
19th July 2024	Year 5 & 6 Whitby Trip
22nd July 2023	VPA FUN FANANZA DAY!!
23rd July 2024	School Closes at 1.00 pm
4th September 2024	School Opens for Autumn 1